

# FLOOR MOUNTS TSR+ sylomer<sup>®</sup> by getzner

The AMC-MECANOCAUCHO® TSR type anti vibration mounts include a microcellular and resilient polyurethane compound for anti-vibration purposes called Sylomer®. This Sylomer® is oil resistant and with a temperature range of -30°C/+70°C.

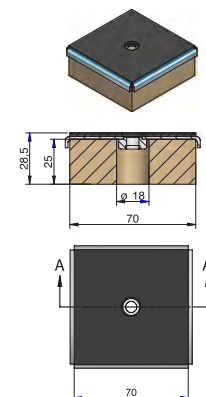
The TSR mounts can be fixed mechanically thanks to the internal nut incorporated to the metallic part that is treated with an antioxidant coat. This coating complies to the RoHs regulations.

In order to match the application, 6 different densities are supplied for a wide range of loads.

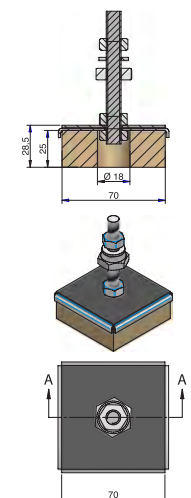


Type	Deflection (mm)	Min. Load (kg)	Max. Load (kg)	Freq. (Hz) Min. Load	Freq. (Hz) Max. Load	K (N/mm)	E Modulus (N/mm²)	M	Weight (kg)	Code
TSR 55 + KIT NIV	1,6	10	25	23,8	11	0,16	0,87	M8	0,2	<b>157101</b>
								M10	0,253	<b>157107</b>
								M12	0,314	<b>157113</b>
TSR 110 + KIT NIV	2,1	25	45	17,4	11,1	0,23	1,25	M8	0,21	<b>157102</b>
								M10	0,258	<b>157108</b>
								M12	0,324	<b>157114</b>
TSR 220 + KIT NIV	2,1	45	75	16	11,1	0,38	2,03	M8	0,225	<b>157103</b>
								M10	0,273	<b>157109</b>
								M12	0,34	<b>157115</b>
TSR 450 + KIT NIV	2,7	75	150	15,5	10,4	0,67	3,58	M8	0,24	<b>157104</b>
								M10	0,287	<b>157110</b>
								M12	0,353	<b>157116</b>
TSR 850 + KIT NIV	2,9	150	250	14,2	11,1	1,28	6,9	M8	0,26	<b>157105</b>
								M10	0,31	<b>157111</b>
								M12	0,375	<b>157117</b>
TSR 1200 + KIT NIV	2,9	250	300	11	10	1,24	6,7	M8	0,275	<b>157106</b>
								M10	0,3	<b>157112</b>
								M12	0,366	<b>157118</b>
TSR 55	1,6	10	25	23,8	11	0,16	0,87	M8	0,163	<b>157001</b>
								M10	0,163	<b>157008</b>
								M12	0,163	<b>157014</b>
TSR 110	2,1	25	45	17,4	11,1	0,23	1,25	M8	0,173	<b>157002</b>
								M10	0,173	<b>157009</b>
								M12	0,173	<b>157015</b>
TSR 220	2,1	45	75	16	11,1	0,38	2,03	M8	0,188	<b>157003</b>
								M10	0,188	<b>157010</b>
								M12	0,188	<b>157016</b>
TSR 450	2,7	75	150	15,5	10,4	0,67	3,58	M8	0,203	<b>157004</b>
								M10	0,203	<b>157011</b>
								M12	0,203	<b>157017</b>
TSR 850	2,9	150	250	14,2	11,1	1,28	6,9	M8	0,223	<b>157005</b>
								M10	0,223	<b>157012</b>
								M12	0,223	<b>157018</b>
TSR 1200	2,9	250	300	11	10	1,24	6,7	M8	0,238	<b>157006</b>
								M10	0,238	<b>157013</b>
								M12	0,238	<b>157019</b>

TSR without Levelling kit



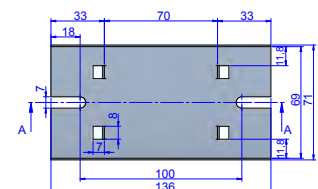
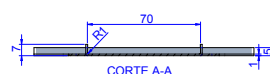
TSR with Levelling kit



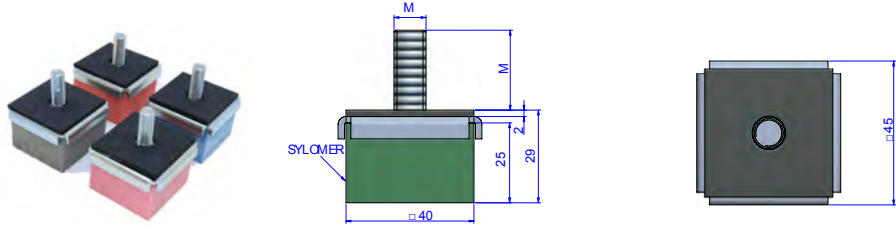
## TSR fixation

Fixing base for TSR 70x70. This fixing element will help to secure the position of the TSR 70x70 to avoid movement. Ideal for uneven floors.

Type	Code
Base fijación TSR 70x70	<b>606866</b>

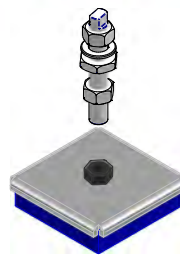
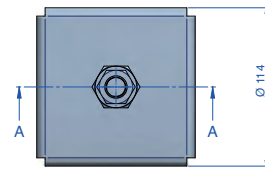
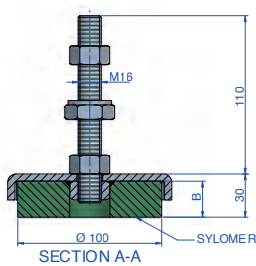


# TSR+ sylomer<sup>®</sup> by getzner 40x40



Type	Max. Load (kg)	Deflection (mm)	Nat Freq. (Hz)	M	Code
TSR 55 40X40	7.5	1.6	13.6	M-8x20	<b>157035</b>
				M-10x25	<b>157066</b>
TSR 110 40X40	15	2	11.7	M-8x20	<b>157036</b>
				M-10x25	<b>157067</b>
TSR 220 40X40	25	2,1	11.5	M-8x20	<b>157037</b>
				M-10x25	<b>157070</b>
<b>NEW</b> TSR 450 40X40	45	2,4	11.6	M-8x20	<b>157223</b>
				M10x25	<b>157224</b>
<b>NEW</b> TSR 850 40X40	70	2,4	11.1	M-8x20	<b>157039</b>
				M10x25	<b>157222</b>

# TSR+ sylomer<sup>®</sup> by getzner 100x100

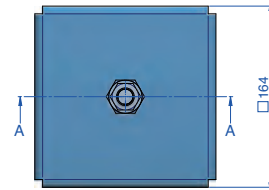
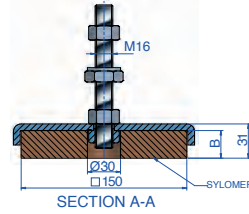


Type	Min. Load (kg)	Max. Load (kg)	B (mm)	Weight (kg)	Freq. (Hz) Min. Load	Freq. (Hz) Max. Load	Code
TSR 100x100 SR_55 M16 + Kit Niv.	0	45	25	1,1	-	13,96	<b>157071</b>
	0	44	50	1,1	-	7,82	<b>157170</b>
TSR 100x100 SR_110 M16 + Kit Niv.	46	92	25	1,16	16,52	11,68	<b>157072</b>
	45	82	50	0,883	10,64	7,88	<b>157171</b>
TSR 100x100 SR_220 M16 + Kit Niv.	93	160	25	1,24	14,41	10,99	<b>157073</b>
	83	148	50	0,927	9,88	7,40	<b>157172</b>
TSR 100x100 SR_450 M16 + Kit Niv.	161	323	25	1,34	14,49	10,23	<b>157074</b>
	149	274	50	1,27	10,30	7,59	<b>157173</b>
TSR 100x100 SR_850 M16 + Kit Niv.	324	530	25	1,39	14,42	11,27	<b>157075</b>
	275	409	50	1,34	9,13	7,49	<b>157174</b>
TSR 100x100 SR_1200 M16 + Kit Niv.	531	641	25	1,42	11,26	10,24	<b>157076</b>
	410	521	50	1,36	8,33	7,39	<b>157175</b>

Type	Min. Load (kg)	Max. Load (kg)	B (mm)	Weight (kg)	Freq. (Hz) Min. Load	Freq. (Hz) Max. Load	Code
TSR 100x100 SR55 M16	0	45	25	1,1	-	13,96	<b>157083</b>
	0	44	50	0,8	-	7,82	<b>157091</b>
TSR 100x100 SR110 M16	46	92	25	1,16	16,52	11,68	<b>157084</b>
	45	82	50	1,16	10,64	7,88	<b>157092</b>
TSR 100x100 SR220 M16	93	160	25	1,24	14,41	10,99	<b>157085</b>
	83	148	50	1,24	9,88	7,40	<b>157093</b>
TSR 100x100 SR450 M16	161	323	25	0,85	14,49	10,23	<b>157086</b>
	149	274	50	0,99	10,30	7,59	<b>157094</b>
TSR 100x100 SR850 M16	324	530	25	1,39	14,42	11,27	<b>157087</b>
	275	409	50	1,06	9,13	7,49	<b>157095</b>
TSR 100x100 SR1200 M16	531	641	25	1,42	11,26	10,24	<b>157088</b>
	410	521	50	1,087	8,33	7,39	<b>157096</b>

# TSR+ sylomer<sup>®</sup> by getzner

## 150x150

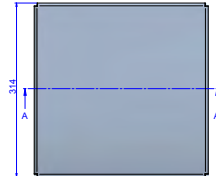
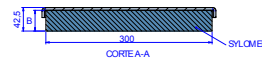
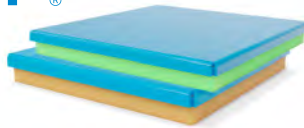


Type	Min. Load (kg)	Max. Load (kg)	B (mm)	Weight (kg)	Freq. (Hz) Min. Load	Freq. (Hz) Max. Load	Code
TSR 150x150 SR_110 M16 + Kit Niv.	0	230	2,25	0	-	11,38	<b>157120</b>
	0	202	0	0	-	8,11	<b>157176</b>
TSR 150x150 SR_220 M16 + Kit Niv.	231	430	2,25	231	14,36	10,53	<b>157121</b>
	203	375	2,37	203	10,20	7,50	<b>157177</b>
TSR 150x150 SR_450 M16 + Kit Niv.	431	860	2,25	431	14,08	9,97	<b>157122</b>
	376	709	2,532	376	10,43	7,59	<b>157178</b>
TSR 150x150 SR_850 M16 + Kit Niv.	861	1420	2,25	861	14,51	11,30	<b>157123</b>
	710	1093	2,72	710	9,45	7,61	<b>157179</b>
TSR 150x150 SR_1200 M16 + Kit Niv.	1421	1900	2,25	1421	12,27	10,61	<b>157124</b>
	1094	1418	2,74	1094	8,55	7,51	<b>157180</b>

Type	Min. Load (kg)	Max. Load (kg)	B (mm)	Weight (kg)	Freq. (Hz) Min. Load	Freq. (Hz) Max. Load	Code
TSR 150x150 SR_110 M16	0	230	1,9	0	-	11,38	<b>157125</b>
	0	202	1,9	0	-	8,11	<b>157145</b>
TSR 150x150 SR_220 M16	231	430	1,9	231	14,36	10,53	<b>157126</b>
	203	375	2,2	203	10,20	7,50	<b>157156</b>
TSR 150x150 SR_450 M16	431	860	1,9	431	14,08	9,97	<b>157127</b>
	376	709	2,26	376	10,43	7,59	<b>157154</b>
TSR 150x150 SR_850 M16	861	1420	1,9	861	14,51	11,30	<b>157128</b>
	710	1093	2,4	710	9,45	7,61	<b>157155</b>
TSR 150x150 SR_1200 M16	1421	1900	1,9	1421	12,27	10,61	<b>157129</b>
	1094	1418	2,8	1094	8,55	7,51	<b>157157</b>

# TSR+ sylomer<sup>®</sup> by getzner

## 300x300



Type	Max. Load (kg)	B (mm)	Weight (kg)	Min. Load (kg)	Freq. (Hz) Min. Load	Freq. (Hz) Max. Load	Code
TSR 300X300 SR28	0	253	5	0	-	9,99	<b>157162</b>
TSR 300X300 SR42	254	380	5	254	11,79	9,64	<b>157163</b>
TSR 300X300 SR55	381	500	5,3	381	10,65	9,30	<b>157164</b>
TSR 300X300 SR110	501	985	5,65	501	13,20	9,41	<b>157165</b>
TSR 300X300 SR220	986	1950	0	986	12,24	8,71	<b>157166</b>
TSR 300X300 SR450	1951	3900	5,8	1951	12,45	8,81	<b>157167</b>